

the Wrinklegram



Club Executive

PRESIDENT

Crystal Marriot
marriott.crystal@live.ca

VICE PRESIDENT

VACANT

PAST PRESIDENT

Patricia Sheveluk
sharpei7636@outlook.com

SECRETARY

Sherry Grant-Nixon
nixonwrinkleranch@gmail.com

TREASURER

Josey St-Pierre
josey@grageltik.ca

SHOW CHAIRPERSON

VACANT

EASTERN DIRECTOR

Patricia Layden

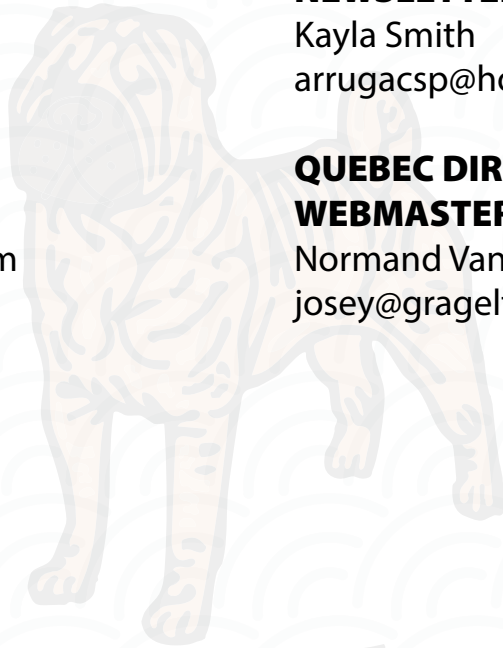
WESTERN DIRECTOR NEWSLETTER EDITOR

Kayla Smith
arrugacsp@hotmail.com

QUEBEC DIRECTOR

WEBMASTER

Normand Vandray
josey@grageltik.ca



Canada

Canada's Top Chinese Shar-pei | 2024

1
NUMBER ONE



GChS Siosalach's Slayer of Monsters

Percy (M) | Owner: M Chisholm

BIS	RBIS	GRP 1	GRP 2	GRP 3	GRP 4	POINTS
0	3	9	13	7	7	1459

2
NUMBER TWO



GChB Periwrinkles Liquid Gold

Honey (F) | Owners: R Holloway, J Kolodziej

BIS	RBIS	GRP 1	GRP 2	GRP 3	GRP 4	POINTS
0	1	7	14	11	9	1011

3
NUMBER THREE



Ch Gumby's Hey Now You're An Allstar NWR

Smash (M) | Owners: R Bryant/J Bryant/
S Demirjian/A Robins/K Smoot

BIS	RBIS	GRP 1	GRP 2	GRP 3	GRP 4	POINTS
0	1	2	2	0	0	282

4
NUMBER FOUR



GCh Periwrinkles Girl On Fire At Wrinkle Ranch

Ellcee (F) | Owners: J Nixon, S Grant-Nixon,
R Holloway, J Kolodziej

BIS	RBIS	GRP 1	GRP 2	GRP 3	GRP 4	POINTS
0	1	1	0	1	0	154

5
NUMBER FIVE



GChG Shines Call The Winning Shot With Tzo Wen N Xin Jen

Eight Ball (F) | Owners: R Holloway, J
Kolodziej, T Bohlke, B Lavere, R Pentecost

BIS	RBIS	GRP 1	GRP 2	GRP 3	GRP 4	POINTS
0	0	0	2	1	0	73

**stats provided by www.canuckdogs.com



CAN YOU TELL US A LITTLE BIT ABOUT YOURSELF AND YOUR BREEDING PROGRAM?

Thank you so much for the interest in Siosalach Shar-Pei & Pugs. I started breeding Chinese Shar-Pei in 1988. I was in college at the time and as a natural animal lover I was drawn to do anything with animals. I was first introduced to purebred dogs through obedience. I saw a demo and thought it was such a great thing for me to step into. I had always dedicated my self to 2 things – animals and sports and it was a great way to combine my 2 loves. After training my family 5 year old farm dog, I found out I needed a purebred to compete. That was the beginning of a long journey. After buying my first dog from a well intentioned back yard breeder – I soon realized that I knew nothing. Mike taught me many things in the early years. He encouraged me to join the local Alberta Chinese Shar-Pei Association (not CKC recognized but a local group of Pei breeders working together), The Chinese Shar-Pei Club of Canada (our National club) and the Chinese Shar-Pei Club of America. For many years I have had the great fortune to work with some very knowledgeable breeders, Andrea Robins, Tami Luddeke, Linda Yasinski to name a few. Those that know me, understand that once I jump into something, I try to give it 100%. After all these years, I have learned, lost, cried and rejoiced in this breeder's journey. I have promoted the Horse Coat as my focus in my breeding program but also realizing that temperaments, health and longevity have to be the focus.

WHAT INSPIRED YOU TO CAMPAIGN PERCY AND WHAT MAKES HIM A STANDOUT SHAR-PEI IN YOUR EYES AND IN THE RING?

Percy was born during Covid and I had to get creative to socialize 4 Pei puppies during a pandemic lockdown. I needed another male for my breeding program. In my mind I always want to keep the Horse coat because in all the years I have been breeding, I RARELY do a Brush to Brush breeding. So I ran on 4 boys – 2 of each coat and eventually narrowed it down to Orion and Percy. At a young age he was a stand out. Very proud, stallion like presence and very much the type I like. But for a full year we had very few shows. He went to 4 weekends and really had no puppy career in 2020 due to lockdowns, etc. In the following year of 2021, Canada had few shows while the US was open for business. Sydney was living a few months across the border so we decided to show a couple of dogs for AKC Championships. Percy started to do well and quickly became a champion willing Best of Breed from the classes over specials. Due to an error in my point counting (a common thing for me..haha), he needed to go to US Nationals and compete in the classes. He won Winners Dog at the Regional under a breeder judge solidify his championship. We had a fabulous Nationals with Percy going on to win Best Futurity Brush Coat and making it to the final cuts in Best of Breed competition as a 1st time young special. We received a lot of compliments from our fellow breeders and I knew that he had that

"something special". I have shown a lot of dogs and as breeder, I have produced a lot of dogs that have shown well. However, in my opinion, a true "specials" dog has that spark – that look at me spark that is important in a show dog. He went on to be spot specialised here in Canada and the US. He was CSPCA Top 25 invitee for 3 years and placed #3 Shar-Pei in Canada for 3 years. He won the 2022 Canadian National Specialty Best of Breed, winning multiple Specialties in the US, 1st Award of Merit at 2023 CSPA Regional & National Specialty, and Best of Breed at the Purina National Dog Show in the US. He ended 2023 competing in Orlando cluster winning Select Dog to the top dogs in the US. Although 2023, I believe was when Percy was at his prime... Sydney and I decided to give 2024 a run as Percy LOVED the spotlight and really had a lot to offer as an ambassador to the breed.

WHAT ARE SOME UNIQUE CHALLENGES YOU'VE ENCOUNTERED CAMPAIGNING A CHINESE SHAR-PEI, ESPECIALLY COMPARED TO MORE COMMON OR POPULAR BREEDS IN THE SHOW WORLD?

Interesting question. I have campaigned several Pugs over the years, and they are a very popular breed. YES, it is very different for a Chinese Shar-Pei here in Canada, especially. I think it has improved in recent years but it is still a challenge. The biggest problem is education and public perception! Many judges are STILL not that educated on our breed. Some judges are afraid of the breed and approach very tentatively, some are still prying eyes open, many do not understand dilutes AT ALL, some still approach from the side or slap their hand on top the head which can not be a great feeling for a Pei that has a correct eye and head frame wrinkling. Some judges are offended when they don't have a Golden Retriever personality. It is truly hard to stand out in group or Best In Show when your dog is a snob. Top it off for us, Percy was incredibly hard to get show pics of... he just was so desensitized and really could care less with all the people clapping, etc. Many judges can choose the popular dog, one that is most advertised or seen at shows the most. This can be your dog or the competition, if it's the competition – you will have to study judges and find ones that may be unbiased. There is a saying in the dog show world...we don't advertise for the knowledgeable judge; we advertise to sway the uncertain ones. We also must deal with foreign judges. This can present problems in that most FCI countries prefer a dog that is much less in type than North American Shar-Pei with smaller heads, lesser in wrinkles and rounder, open eyes. That is not my type. Lastly for me, I believe Shar-Pei do not do great living on the road. For the first few years of Percy's show career, we spot specialised him and that meant he came home often. But due to a recent separation and work restrictions, I personally could not go to many shows. Sydney is fantastic but a life in a box truck is not great for Shar-Pei. As we all know they can get bored with stuff and they are smarter than most breeds. That is why I made the decision in May to bring Percy home. We took 2 full months off (June & July). Who does that in the middle of a big campaign year!? We were #1 when he stepped back, knowing that we would most likely lose that standing. He was a bit "meh", I say that because Percy always gave his best, I just felt his best was a bit tired. I definitely made the best decision for my dog. He came back in August and won a Reserve Best In Show!



WHAT KIND OF CONDITIONING, GROOMING, AND TRAINING DOES IT TAKE TO KEEP PERCY IN PEAK FORM FOR THE SHOW CIRCUIT?

I believe people in this breed are not aware of the challenges in this area. Conditioning is so important in physical condition and mental condition. I just want to mention here that I think breeders and exhibitors in THIS breed tend to special our breed WAY too young. I have done it many times as well. I have watched many nice dogs hit the ring weekend after weekend (now as early as 4 months) and continue to show A LOT before they are physically and mentally mature. In my opinion, its like pushing a child athlete. Their growth plates don't close until 12-18 months. It is common practice to NOT breed them until after 2 years, so why do we push them to be athletes until they are mature? Conditioning becomes easier once they are mature and can build muscle properly. They are also done growing in height and now you can work on building the athlete you want. Many different breeds have to wait until they have coat or they have maturity in body and muscle before they are campaigned. I would start Mental conditioning in the whelping box. Lots of touch, eventually sounds (running background noises). I know it sounds funny but its true. Once they are able to have visitors, we then take the show dogs for turns up to the boarding kennel. It is here that they build



independence and become confident youngsters. It is also so very important to build trust in strangers. Show training is done in stages. As Percy was 5 years old when we campaigned him, all his show training was already done, but like I said he needed a break mentally and that is an important part to a successful campaign. As for grooming, it is a delicate balance. My Pugs would get weekly baths and toenails every Wednesday. That cannot be done in Shar-Pei. As a brush coat, it was a delicate balance between too much bathing and making the coat very soft or depleting the oils in the Pei coat and not enough bathing where the coat feels gritty or in summer months, they start to blow coat. Regular bathing is so important to maintain ears, weekly nails and coat conditioning. Lastly, crate training and down time is soooooo important. It is mentally exhausting for dogs to perform or be "ON" all the time. My dogs are all crate trained and taught mandatory rest in down times. This allows them to be at their best when its ring time. People who walk their dog around the building or have them sitting at ring side all day are not helping their dogs. Percy, like all my show dogs, is trained to eat in his crate. The crate remains the same in every province or state and every hotel. This is done because keeping a dog in peak condition is tough and if they don't eat due to heat, stress or girls in season – then it can show in their energy and performance. I also use bottled water or jugs of home water when on the road.

WHAT WAS THE MOST MEMORABLE MOMENT OF PERCY'S CAMPAIGN?

I had 2 moments and an honourable mention. The honourable mention was getting to show him myself at the 2023 US Nationals and in the Top 25. He showed great and looked great and scored very high and I was a very proud breeder. He is a 3rd generation (Yankee, Pepsi and him) of Top 25 invitees. I loved it when I pulled him off the circuit in May and received a few "are you nuts comments" but really felt in my heart it was the best thing. So the 1st moment was when he went back out after his rest to Grey Bruce KC. Sydney messaged me to say he was showing fantastic and the next day he wins a Reserve Best in Show. This win was special for 2 reasons: 1) it validated my decision, and 2) Isaac Clark (Sydney's long time assistant and really good kid) was handling Percy in Best in Show and it was Isaac's first big win (we gave him the ribbon for a keepsake). Second moment when he won his very big Reserve Best in Show at the Aurora Kennel Club in November under a foreign judge. Not only did he show like a million bucks, but it also really solidified his #1 spot. Fantastic moment. I could not be there in person but watched on live stream and I truly appreciated all the comments that flooded in on text and messenger.



CAN YOU TELL US A BIT ABOUT PERCY'S PERSONALITY OUTSIDE THE RING? DOES HE HAVE ANY QUIRKS OR HABITS THAT MAKE HIM ESPECIALLY ENDEARING?

I have been very fortunate in that Percy LOVES everyone. It is very rare that you can pass the show lead of a Shar-Pei to another person...let alone ANYONE. Percy has been shown by over a dozen different people. He is a fantastic ambassador for the breed and has changed the minds of many a show person towards the breed we love. He reminds me a bit of his grandfather Yankee, who was a very special dog to me. He loves everyone and everything. He gets along with all the other dogs in Syd's truck and has been known to snuggle a Wheaten or Havanese. He really is a sweet dog and made a ton of friends during his year. When I had the opportunity to make a show, it was a pleasure to hear over and over again, people telling me "how much they just loved Percy". No dog is perfect, but some of them just sparkle a little brighter.



Dog Shows

| Ready, set, show! Nail it with these dog show tips and tricks.

GETTING STARTED IN DOG SHOWING: A BEGINNER'S GUIDE

Showing dogs is both an art and a discipline. It takes commitment, preparation, and a clear understanding of the system. Whether you're aiming to compete seriously or just want to get your feet wet, this guide will help you understand the core principles you must learn before stepping into the ring.

PURPOSE: Understand What Dog Showing is Really About

A dog show isn't just about whose dog is the cutest. It's a structured evaluation of breeding stock. Judges compare each dog against a written breed standard - a detailed blueprint of what the ideal specimen of that breed should look and act like.

As a beginner:

- Know the Shar-pei breed standard. Read it on the CSPCC website, the Canadian Kennel Club (CKC) website or towards the end of this Wrinklegram.
- Learn what a Shar-pei should look like, how they moves, and the temperament he or she should display in the ring.



TRAINING: Your Dog Needs to Know the Rules of the Ring

Your dog must learn specific behaviors that are very different from everyday obedience:

- **Stacking:** Standing still in a specific position so the judge can evaluate structure.
- **Gaiting:** Moving at a controlled trot beside you, showing the dog's movement and posture.
- **Judge examination:** Allowing a stranger to check the dog's teeth, structure, coat, etc., calmly and confidently.

TIP: Start training early, and enroll in a conformation handling class. These are offered at many local kennel clubs, training centres, and by people in the show community. Need help? Join your provincial dog show group on social media to find classes near you!

Dog Shows

| Ready, set, show! Nail it with these dog show tips and tricks.



RING PROCEDURE: Learn the Flow of the Show

Familiarity with the judging process in the ring is essential for any handler. Below is a typical sequence of events during breed judging.

Judging begins with the class males, followed by the class bitches. Once the Winners Dog and Winners Bitch have been selected, the Specials - dogs and bitches - enter the ring along with the Winners.

Upon entering the ring, the judge will typically observe your dog in a stacked position, then ask you to move your dog around the ring.

Each dog is then examined individually on the ramp - in Canada, Shar-pei are a ramp mandatory breed. The judge will inspect the bite, mouth, and head, assessing key breed-specific features such as expression, well-padded muzzle, and blue-black tongue. They will also evaluate the dog's physical structure by feeling the chest, topline, and rear.

After the hands-on examination, the judge will request "down and back" movement. This involves gaiting the dog away from and back toward the judge, allowing them to assess both front and rear movement. Upon return, you should free-stack your dog for a final evaluation.

Placements are determined based on how closely each dog conforms to the breed standard. If your dog is awarded Best of Breed, Best Puppy in Breed, or Best Baby Puppy in Breed, you will be required to return to the ring for the group competition.

TIP: Watch shows in person or online. Pay attention to ring craft — how handlers move, stack, and present their dogs. Every judge has different procedures in their ring - always go up before you ring time and watch your judge with other dogs.

PRESENTATION: The Dog Must Be Groomed to Breed Standard

While Shar-pei are generally a low-maintenance breed, there are a few essential grooming and presentation tasks to complete before stepping into the show ring:

- Ensure your dog is clean and presentable. While it's commonly discouraged to bathe a Shar-Pei immediately before a show—since it may soften the coat—your dog's coat should still be free of odors and visible stains.
- Keep the nails trimmed short to maintain proper foot structure and prevent the toes from splaying. Regular trimming every 1–2 weeks is recommended.
- Make sure your dog's eyes are clear and free of any discharge.
- Expect some drool! Tuck a hand towel or washcloth into your waistband or pocket to discreetly manage excess saliva during the show.

OVULATION TIMING WITH PROGESTERONE TESTING

Understanding ovulation timing in dogs using progesterone testing is essential for breeders and veterinarians to optimize mating or artificial insemination (AI). Dogs do not ovulate at the same point in their heat cycle as other species like humans. In canines, progesterone levels are the most reliable indicator of ovulation timing.

CANINE ESTROUS CYCLE OVERVIEW

The cycle consists of four stages:

Proestrus (7–10 days)

- Vulva swelling, bloody discharge
- Female attracts males but won't allow mating
- Estrogen is high; progesterone is low

Estrus (5–10 days)

- Female is receptive to mating
- Ovulation occurs
- Progesterone rises rapidly; estrogen drops

Diestrus (about 60 days)

- Reproductive system returns to resting state
- Progesterone remains high regardless of pregnancy

Anestrus (4–6 months)

- Reproductive inactivity between cycles

PROGESTERONE TESTING TIMELINE

Progesterone testing is typically done via blood test (serum) using either a quantitative lab assay (chemiluminescence immunoassay is most accurate) or in-house semi-quantitative tests.

Here's what the progesterone levels mean:

Progesterone Level (ng/mL)	Interpretation
<1.0	Pre-ovulatory (no LH surge yet)
1.0–1.9	LH surge likely just occurred
2.0–3.9	Ovulation expected in ~2 days
4.0–10.0	Ovulation occurring or just occurred
>10.0	Post-ovulation (best AI window)



Raising the Best

Breeder tips & tricks for happy, healthy puppies.

TIMING OVULATION

Ovulation usually occurs 2 days after the LH surge, and the eggs need an additional 2–3 days to mature before they are fertile. This gives us:

- LH surge: Day 0
- Ovulation: Day
- Fertile window: Days 4

This is why multiple progesterone tests (every 2–3 days) are done starting around day 5–6 of proestrus until a clear rise is detected.

BREEDING RECOMMENDATIONS BASED ON PROGESTERONE

1. Natural Mating or Fresh Semen AI

Breed on days 3 and 5 post-ovulation

Ideal progesterone: 10–20 ng/mL

2. Chilled Semen

Breed once, 3–4 days post-ovulation

Ideal progesterone: 15–25 ng/mL

3. Frozen Semen

Breed once, 5–6 days post-ovulation (best timing!)

Ideal progesterone: 20–30+ ng/mL

PRACTICAL TIPS

- Look for a veterinarian who specializes in reproduction, as they typically possess a wealth of knowledge and all the necessary tools to support you effectively.
- Start testing on day 5 of visible heat signs.
- Test every 2–3 days until ovulation is confirmed.
- Pair with vaginal cytology or LH testing if available, for increased accuracy.
- Use a reputable lab for quantitative testing if using frozen semen.



Shar-Pei Auto-inflammatory Disease (SPAID) is a heritable syndrome defined by recurrent episodes of fever and inflammation with no known pathogenic or autoimmune cause. SPAID is characterized by five signs of inflammation, Familial Shar-Pei Fever (FSF), Arthritis, Vesicular Hyaluronosis, Otitis and Amyloidosis.

TESTING

The SPAID test identifies Shar-Pei or Shar-Pei crosses most likely to be affected by SPAID during their lifetime. The assay provides an estimate of an individual's increased risk to develop clinical signs of SPAID. The assay may be used to determine the genotype of a dog of breeding age to inform decisions about potential breeding partners aiming to decrease the number of offspring at increased risk of experiencing SPAID.

The result can be used by owners two-fold: i) as a health tool to suggest a dog should be watched more carefully for signs of SPAID and ii) as a breeding tool with the aim of reducing the presence of SPAID in the worldwide Shar-Pei population.

The test is appropriate for Shar-Pei or Shar-Pei crosses only.

Shar-Pei Auto-inflammatory Disease (SPAID) encompasses multiple signs of inflammation. The clinical disease status of a dog is a product of the genetic marker tested here and the effect of the dog's environment. The results of this test cannot exclude that the dog assayed carries other mutations that can cause inflammatory disease in Shar-Pei.

Non Carrier	CNV = 2 Alleles = 1 & 1	No expected risk for SPAID	<ul style="list-style-type: none"> • Allele 5, associated with SPAID, not detected. • Non-carrier for allele 5 (i.e., carrying alleles 1 & 1; CNV=2) may have no increased risk for SPAID.
Single Carrier	CNV = 6 Alleles = 1 & 5	Potential risk for SPAID	<ul style="list-style-type: none"> • One copy of allele 5, associated with SPAID, detected. • Dog with one copy of allele 5 (i.e., carrying alleles 1 & 5; CNV=6) has four times more risk for SPAID than a non-carrier. • If bred with another single carrier, there is 25% chance for offspring being a double carrier for allele 5.
Double Carrier	CNV = 10 Alleles = 5 & 5	Prone for SPAID	<ul style="list-style-type: none"> • Two copies of the allele 5, associated with SPAID, detected. • Dog with two copies of allele 5 (i.e., carrying alleles 5 & 5; CNV=10) has eight times more risk than a non-carrier and is prone for SPAID in its lifetime.

A HERITABLE DISEASE LINKED TO THE DISTINCTIVE APPEARANCE OF SHAR-PEI

It has been shown that the genetic variant linked to SPAID is also associated with the increased expression of Hyaluronan Synthase 2 (HAS2), the driver of long-chain hyaluronan (HA) synthesis. The elevated expression of HAS2 results in hereditary cutaneous hyaluronanosis, and the breed's heavily thickened and wrinkled skin.

It is hypothesized that the recurrent inflammation experienced by some Shar-Pei is an effect of the over production and subsequent degradation of abundant high molecular weight HA, via natural homeostasis and other numerous environmental factors. The resultant low molecular weight HA acts as a danger associated molecular pattern "DAMP" and triggers the release of inflammatory interleukins.

Cornell University College of Veterinary Medicine

<https://www.vet.cornell.edu/animal-health-diagnostic-center/laboratories/molecular-diagnostics/shar-pei-auto-inflammatory-disease-spaid>



Photo Contest

**Chasing sunshine with
your best fur-iend!**

***Out exploring your
favourite trails?***

Catching rays at the beach?

Kicking back in the garden?

Let's see those Pei!

Show us your Shar-pei enjoying
summer for your chance to win a
**\$50 Petsmart E-Gift Card and
1-year CSPCC Membership.**

Every photo you share is another
chance to win so get creative and
show us your favourite summer
memories.

Photos must be submitted via email to
CSPCC_Submissions@hotmail.com by
**September 30, 2025. Draw to take place
October 4th, 2025.** Winner will be
announced on the CSPCC Facebook page
and notified via email.

*You do not have to be a member of the CSPCC to
enter this contest. Photos must include a Shar-pei.*

*By submitting your photos, you grant us
permission to use them for promotional materials,
social media, publications, and our website.*

Member Directory

* Dues are payable on the 1st day of January of each year. Any members joining in September or later will receive the next year's membership, those joining before September will be due January 1st next year.

NAME	LOCATION	CONTACT	BREEDER
Crystal Marriott <i>A Wrnkl n Tyme</i>	Alberta	marriott.crystal@live.ca	Yes
Laureen Smith <i>MiWei</i>	Alberta	miweisharpei@gmail.com	Yes
Kayla Smith <i>Arruga</i>	Alberta	arrugacsp@hotmail.com	Yes
Melody Whitrow <i>VistaRolls</i>	Saskatchewan	mwhitrow@hotmail.com	Yes
Michelle Chisholm <i>Siosalach</i>	Ontario	wrnkldog@siosalach.com	Yes
Sherrie Grant-Nixon <i>Nixon Wrinkle Ranch</i>	Ontario	nixonwrinkleranch@gmail.com	Yes
Rhonda Holloway <i>Periwrinkles</i>	Ontario	periwrinklessharpei@gmail.com	Yes
John Kolodziej <i>Periwrinkles</i>	Ontario	helpmer@rogers.com	Yes
Pamala Lee <i>Rich in Rolls</i>	Ontario	richinrolls@hotmail.com	Yes
Jeff Nixon <i>Nixon Wrinkle Ranch</i>	Ontario	jeffnixon07@yahoo.com	Yes
Pat Sheveluk	Ontario	harpei7636@outlook.com	No
Josey St Pierre	Quebec	josey@grageltik.ca	No
Normand Vandray	Quebec	josey@grageltik.ca	No
Patricia Layden	New Brunswick		No

Updated July 31st, 2025

Become a Member

We welcome all Chinese Shar-pei enthusiasts to join!

Date

Type of Membership

Family (\$30.00)

Individual (\$25.00)

Foreign (\$10.00)

Pet Owner (\$10.00)

Will Pay By

Paypal or E-transfer

First Name

Last Name

Address

Phone Number

Email Address

Are you currently a member of the CKC?

Yes

No

Are you presently an active breeder of Shar-pei?

Yes

No

Do you belong to any other clubs? If so, who:

If so, how many litters per year?

Other breeds you own

Kennel Name

Are you interested in becoming a Rescue Volunteer?

Yes

No

Do you participate in any events with your dogs?

Yes

No

If yes, are you able to:

Foster

Adopt

Training

If yes, please list:

Transport

Phone Support

I/we wish to apply for membership in the Chinese Shar-Pei Club of Canada. I/we agreed to abide by the Constitution, By-Laws and Code of Ethics of the Club, and agree that I/we have never been found guilty of a charge of cruelty to animals. Your application will be reviewed by the CSPCC Board of Directors once received. If you are not accepted for membership your payment will be returned. The CSPCC reserves the right to reject without comment or explanation any application for any reason.

Signature

Note: By signing this form electronically, I/We have read the constitution and by-laws of the CSPCC and agree to abide by them and that the signature(s) represent a manual signature.

PAYMENT CAN BE MADE:

PAYPAL: send to peiclubcanada@gmail.com & use sharpei as the password.

E-TRANSFER: send to peiclubcanada@gmail.com & use sharpei as the password.

Breed Standard

GENERAL APPEARANCE | An alert, dignified, active, compact dog of medium size and substance, square in profile, close-coupled, the well proportioned head slightly but not overly large for the body. The short, harsh coat, the loose skin covering the head and body, the small ears, the “hippopotamus” muzzle shape and the high set tail impart to the Shar-Pei a unique look peculiar to him alone. The loose skin and wrinkles covering the head, neck and body are superabundant in puppies but these features may be limited to the head, neck and withers in the adult.

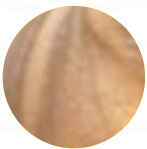
TEMPERAMENT | Regal, alert, intelligent, dignified, lordly, scowling, sober and snobbish, essentially independent and somewhat standoffish with strangers, but extreme in his devotion to his family. The Shar-Pei stands firmly on the ground with a calm, confident stature.

SIZE | Height at the withers: 45.75 to 50.75 cm (18 to 20 in) Weight: 18.25 to 27.25 kg (40 to 60 lb) The dog is usually larger and more-square bodied than the bitch but both appear well proportioned. Proportion: The height of the Shar-Pei from the ground to the withers is approximately equal to the length from the point of breast-bone to the point of rump.

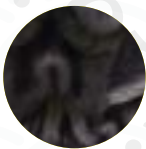
COAT | The extremely harsh coat is one of the distinguishing features of the breed. The coat is absolutely straight and offstanding on the main trunk of the body but generally lies somewhat flatter on the limbs. The coat appears healthy without being shiny or lustrous. Acceptable coat lengths may range from extremely short “horse coat” up to the “brush coat,” not to exceed 2.5 cm (1 in) in length at the withers. A soft coat, a wavy coat, a coat in excess of 2.5 cm (1 in) in length at the withers or a coat that has been trimmed is a major fault. One coat type is not to be preferred over the other. The Shar-Pei is shown in its natural state.

COLOUR | Only solid colours and sable are acceptable and are to be judged on equal basis. A solid-coloured dog may have shading, primarily darker down the back and on the ears. The shading must be variations of the same body colour (except in sables) and may include darker hairs throughout the coat. A pigmented dog may have a darker mask on the face.

Fawn



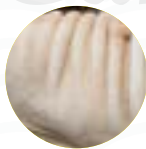
Black



Chocolate



Cream



HEAD | Large, slightly but not overly, proudly carried and covered with profuse wrinkles on the forehead continuing into side wrinkles framing the face. **Eyes:** Dark, small, almond-shaped and deep-set, displaying a scowling expression. In the dilute-coloured dogs, the eye colour may be lighter. **Ears:** Extremely small rather thick, equilateral triangles in shape, slightly rounded at the tips, edges of the ear may curl. Ears lie flat against the head, are set wide apart and forward on the skull, pointing toward the eyes. The ears have the ability to move. **Skull:** Flat and broad, the stop moderately defined. **Muzzle:** One of the distinct features of the breed. It is broad and full with no suggestion of snipiness. The length from nose to stop is approximately the same as from stop to occiput. **Nose:** Large and wide and darkly pigmented, preferably black but any colour nose conforming to the general coat colour of the dog is

acceptable. In dilute colours, the preferred nose is self-coloured. Darkly pigmented cream Shar-Pei may have some light pigment either in the centre of their noses or on their entire nose. The lips and top of muzzle are well padded and may cause a slight bulge at the base of the nose. Tongue, roof of mouth, gums, flews: Solid bluish black is preferred in all coat colours except in dilute colours, which have a solid lavender pigmentation. A spotted tongue is a major fault. A solid pink tongue is a disqualification. (Tongue colours may lighten due to heat stress; care must be taken not to confuse dilute pigmentation with a pink tongue.)

Teeth: Strong, meeting in a scissors bite. Deviation from a scissors bite is a major fault.

NECK | Medium length, full and set well into the shoulders. There are moderate to heavy folds of loose skin and abundant dewlap about the neck and throat.

FOREQUARTERS | **Shoulders:** Muscular, well laid back and sloping. **Forelegs:** When viewed from the front, straight, moderately spaced, with elbows close to the body. When viewed from the side, the forelegs are straight, the pasterns are strong and flexible. The bone is substantial but never heavy and is of moderate length. Removal of front dewclaws is optional. **Feet:** Moderate in size, compact and firmly set, not splayed.

BODY | **Topline:** The topline dips slightly behind the withers, slightly rising over the short, broad loin. **Chest:** Broad and deep with the brisket extending to the elbow and rising slightly under the loin. A level, roached or swayed topline shall be faulted. **Back:** Short and close-coupled. **Croup:** Flat, with the base of the tail set extremely high, clearly exposing an uptilted anus.

HINDQUARTERS | Muscular, strong, and moderately angulated. The metatarsi (hocks) are short, perpendicular to the ground and parallel to each other when viewed from the rear. Removal or rear dewclaw is optional. Feet: As in front.

TAIL | The high set tail is a characteristic feature of the Shar-Pei. A low tail shall be faulted. The tail is thick and round at the base, tapering to a fine point and curling over to either side of the back. The absence of a complete tail is a disqualification.

GAIT | The movement of the Shar-Pei is to be judged at a trot. The gait is free and balanced with the feet tending to converge on a centre line of gravity when the dog moves at a vigorous trot. The gait combines good forward reach and a strong drive in the hindquarters. Proper movement is essential.

FAULTS | Any departure from the aforementioned ideals shall be considered faulty to the degree in which it interferes with the health and well-being of the dog and the breed's traditional purpose.

MAJOR FAULTS

Deviation from a scissors bite. Spotted tongue. A soft coat, a wavy coat, a coat in excess of 2.5 cm (1 in) in length at the withers or a coat that has been trimmed.

DISQUALIFICATIONS

Pricked ears. Solid pink tongue. Absence of a complete tail.

Not a solid colour – i.e., Albino; brindle; particoloured (patches); spotted (including spots, ticked or roaning); tan-pointed pattern (including typical black-and-tan or saddled patterns or shading that has a defined pattern – i.e., distinct butterfly pattern on the chest)

CANADIAN KENNEL CLUB CHINESE SHAR-PEI

Advertising

All advertising rates and procedures are subject to change at any time.

PROCEDURES FOR SUBMITTING ADVERTISING

Send all advertising in .pdf or .jpg format to: CSPCC_Submission@hotmail.com.

Make all advertising cheques payable to: The Chinese Shar-Pei Club of Canada or pay by e-transfer to peiclubcanada@gmail.com, password: sharpei

No ad will be accepted without full payment prior to issue of the WrinkleGram.

The WrinkleGram is not responsible for errors in advertising. All efforts will be made to ensure accuracy of the copy.

PHOTO & ARTICLE SUBMISSIONS

Article & photo submissions are always welcome! Please email your submissions to: CSPCC_Submissions@hotmail.com

NEWSLETTER POLICY

The WrinkleGram will only accept promotional advertising for the Chinese Shar-Pei whose appearance is described as acceptable in the official Chinese Shar-Pei Standard.

No letters/articles will be published that may in any way, criticize any members of the CSPCC, his/her dog(s) or kennel, or the judging of any dog. All letters must indicate the author.

Any articles submitted must include the author. Any articles submitted to the newsletter that will entail considerable cost to publish must be approved by the Executive prior to publication.



ITEM	MEMBER PRICE	NON-MEMBER PRICE
Front Cover 8" W x 9.625"	\$25.00	\$35.00
Back Cover 8" W x 9.625"	\$20.00	\$30.00
Full Page 8" W x 9.625"	\$15.00	\$25.00
Business Card 3.5" W x 2" H	\$10.00	\$20.00
Obituaries 8" W x 2.5" H	FREE!	FREE!

WrinkleGram is the official newsletter of the Chinese Shar-Pei Club of Canada. There will be no fewer than two issues per year. Articles of interest, letters, etc. are to be sent to the editor. Telephone submissions are NOT acceptable. All advertising copy is also sent to the editor. The Wrinkle-Gram editor reserves the right to accept, edit or reject any copy received for publication or advertising. Articles are the responsibility of the correspondent. Content does not necessarily reflect the policy of the CSPCC or the opinions of the editor.



SAVE THE DATES

DORCHESTER FAIRGROUNDS
4939 HAMILTON ROAD DORCHESTER
ONTARIO, CANADA

2 CHINESE SHAR-PEI SPECIALTY SHOWS

**CHINESE SHAR-PEI CLUB OF ONTARIO
SPECIALTY SHOW**

FRIDAY AUGUST 22, 2025

BREEDER JUDGE: MARGE CALLTHARP USA
SWEEPSTAKES BREEDER JUDGE SHARON PALMAY

**CHINESE SHAR-PEI CLUB OF CANADA
NATIONAL SPECIALTY**

SATURDAY AUGUST 23, 2025

NON-SPORTING BREEDER JUDGE: SHAWN NICHOLS CANADA
SWEEPSTAKES JUDGE TRACY CARTWRIGHT



THE SAME WEEKEND

ELGIN COUNTY KENNEL CLUB
AUGUST 21, 22, 23, 24, 2025

SHAR-PEI BREED JUDGES

THURSDAY MARK BERRYMAN CANADA

FRIDAY JON COLE USA

SATURDAY BRIAN MEYER USA

SUNDAY CINDY MEYER USA

SATURDAY

CLUB VI (NON-SPORTING) ONTARIO SPECIALTY

BREED JEAN TREMBLAY

LIMIT GROUP 6 BREED SHOW

SUNDAY WENDY PAQUETTE

7 SHOWS FOR CHINESE SHAR-PEI IN 4 DAYS

FOR ON SITE CAMPING

RESERVATIONS

MIKE GELINAS - GELLY@EXECULINK.COM

HOTEL RESERVATIONS

COMFORT INN 1156 WELLINGTON ROAD LONDON, ONTARIO 519 685-9300

LAMPLIGHTER INN 591 WELLINGTON ROAD LONDON, ONTARIO 519 681-7151

QUALITY SUITES ON WELLINGTON 1120 DEARNESS LONDON, ONTARIO 519 680-1024

RESIDENCE INN BY MARRIOTT 383 COLBORNE STREET LONDON, ONTARIO 519 433-7222

COMFORT INN AND SUITES INGERSOLL, ONTARIO 519 425-1100

TRAILER RENTAL RESERVATIONS

CITY ESCAPES TRAILER RENTALS 519 709-1442

BRANNIGAN TRAILERS 226 577-8828

DOCKSIDE TRAILERS 519 631-1144

SHOW SECRETARY

MJN SHOW SERVICES

33 DEVONGLEN DRIVE

KITCHENER, ON N2E 1Z6

PHONE: (519) 568-8582

FAX: (519) 568-8484

EMAIL: INFO@MJNSHOWSERVICES.COM

WEBSITE: HTTP://WWW.MJNSHOWSERVICES.COM

THE ENTRY LINE

PHONE ENTRIES (800)293-2935

ON LINE HTTP://WWW.ENTRYLINE.COM

We look forward to seeing everyone for the National Weekend in August